

DRILL PIPES

DTH | R O T A R Y | HDD | RC



Contents

Technical Specification	3
Common threads on our Drill Pipes	4
Standard Pipes	5
eX-Flow®	11
Standard Drill Collar	12
AT L A S COPCO CM (695/760/780)	13
AT L A S COPCO ROC (F6/L6/L8/ SmartRoc/FlexiRoc)	14
AT L A S COPCO T4 (DM30/45/50, T4, RD20)	16
AT L A S COPCO SIMBA Underground	18
AT L A S COPCO TH60 (T2/T3/TH60/ 75E/100A)	19
AT L A S COPCO DM25	19
AT L A S COPCO PIT-VIPER/DMM	20
DRILTECH-GATOR	21
DRILTECH	22
SANDVIK CUBEX/UG/V-30/QXR (with splines)	24
SANDVIK QXR (TJBO) (no splines)	26
SANDVIK DI (TITON/BPI)	28
C AT (REEDRILL, SKS, SKF, MD)	30
C AT BUCYRUS	31
SCHRAMM CAROUSEL	32
SCHRAMM T64	33
SCHRAMM NT/WF (SQS)	34
SCHRAMM T X130	34
CR50	35
CR60	35
HAUSHERR	36
NORDMEYER	38
REICHDRILL	39
REVAHTI	40
SPEEDSTAR	40
RC (REVERSE CIRCULATION)	41
DITCH-WITCH	42
VERMEER	43
TRACTO-TECHNIC	43



Technical Specification

TUBEMATERIAL

Cold Drawn N80 (Standard pipe for DTH)

OD 2 3/4" (70 mm) to 5 1/2" (140 mm) wt up to 8,8 mm

Tensile strenght (Rm) min: 689 N/mm²

Yield strenght (Re) min: 550 N/mm²

Elongation A2" min: 18 %

Hot Rolled E355/ST52 (Standard pipe for DTH/Rotary)

OD 1 1/2" (38 mm) to 16" (406 mm) wt up to 50 mm

Tensile strenght (Rm) min: 490 N/mm²

Yield strenght (Re) min: 355 N/mm²

Elongation A5 min: 22 %

Cold Drawn X95 (On Request)

Tensile strenght (Rm) min: 800 N/mm²

Yield strenght (Re) min: 700 N/mm²

Elongation A2" min: 15 %

Other Grades on request

TOOLJOINTS

Micro Alloy steel: (Standard for DTH)

Surface Hardness: 650–750 HV

Depth: 0,1–0,2 mm

Q+T steel: (Standard for DTH/Rotary)

Hardness min: 300 HB

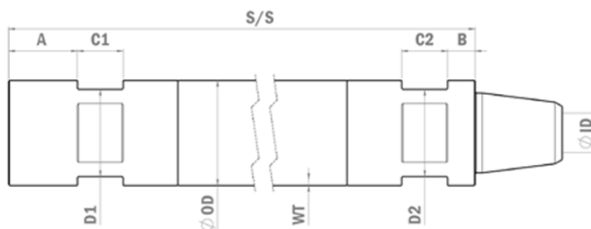


Common threads on our Drill Pipes

Outer diameter (mm)	Thread
42-44	AWJ, N C12
48-51	AWJ, CA21, CR50, NC13, RD40-6
54-57	1 1/4"BD, BWJ, NC16, RD40-6
60-63	BWJ, CR60, NC16, RD50-6, TR51
67-73	ACT/NWY/MAY JR DQ, GG2", HAUSHERR 2", MAYHEW JR, NWJ, RD50-6
76	2 3/8" API REG, 2"Z, ACT/NWY/MAY JR DQ, GG2", MAYHEW JR, RD50-6, #19
79	2 3/8" API REG, ACT/NWY/MAY JR DQ, GG2", MAYHEW JR, RD50-6, #21
83	2 3/8" API REG, MAYHEW REG
89	2 3/8" API IF/NC26, 2 3/8" API REG, 2 7/8" API REG, 2 1/2" Z, 2 3/8" AOH SPEC, 2 3/8" IF DS, MAYHEW REG, RD70-4, #21, #24
95	2 7/8" API REG, NORDMEYER
102	2 7/8 API REG, 3 1/8" DIBH, #24
114	2 7/8" API IF/NC31, 3 1/2" API IF/NC38, 3 1/2" API FH, 3 1/2" API REG, 3 1/2" DIBH, BECO 3", API NC35, #28
127	3 1/2" API IF/NC38, 3 1/2" API FH, 3 1/2" API REG, 3 1/2" DIBH, BECO 3 1/2", #28
140	4 1/2" API REG, 4 1/8" DIBH, 4" API FH/NC40, BECO 3 1/2"
152	4" API IF/NC46, 4 1/2" API FH, 4 1/2" API REG, BECO 4"
159	4 1/2" API IF/NC50, BECO 4"
168	4 1/2" API IF/NC50, 5 1/2" API REG, BECO 4"
177	5 1/2" API FH, 5 1/2" API REG, BECO 4 1/2"
194	5 1/2" API IF, 6 5/8" API REG, BECO 5 1/4"
203	5 1/2" API IF, 6 5/8" API FH, 6 5/8" API REG, BECO 5 1/4"
219	6 5/8" API IF, 7 5/8" API REG, BECO 6"
235	6 5/8" API IF, 7 5/8" API REG, BECO 6"
254	8 5/8" API REG
273	8 5/8" API REG, BECO 8"

Standard Pipes

Diameter: OD = 42–406 mm
Length: S/S = 500–12000 mm



Outer diameter (mm)	Wall thickness (mm)	S/S length (mm)	Thread	Flats (mm)	Weight (kg)	Part Number
---------------------	---------------------	-----------------	--------	------------	-------------	-------------

COMMON SMALL DIAMETER PIPES AND THREADS

42–44	5–7	500–6000	AWJ, NC12			On Request
48–51	5–7	500–6000	AWJ, NC13, RD40-6			On Request
54–57	5–8	500–6000	BWJ, NC16, RD40-6			On Request
60–63	5–8	500–6000	NC16, RD50-6			On Request
70	4,0	1000	MAYHEW JR	55	9,9	10-4130
70	4,0	1000	ACT/NWY/MAY JR DQ	55	9,9	10-2147
70	4,0	1000	RD50-6	55	9,9	10-1002
70	4,0	1500	MAYHEW JR	55	13,1	10-4132
70	4,0	1500	ACT/NWY/MAY JR DQ	55	13,1	10-1541
70	4,0	1500	RD50-6	55	13,1	10-1003
70	4,0	3000	MAYHEW JR	55	22,9	10-4133
70	4,0	3000	ACT/NWY/MAY JR DQ	55	22,9	10-1540
70	4,0	3000	RD50-6	55	22,9	10-1005
70	6,3	1500	ACT/NWY/MAY JR DQ	55	17,5	10-2559
70	6,3	3000	ACT/NWY/MAY JR DQ	55	32,4	10-2139
76	4,0	500	2 3/8" API REG	65	8,4	10-1241
76	4,0	750	2 3/8" API REG	65	10,1	10-1382
76	4,0	1000	2 3/8" API REG	65	11,8	10-1014
76	4,0	1500	2 3/8" API REG	65	15,2	10-1015
76	4,0	1800	2 3/8" API REG	65	17,2	10-1596

Outer diameter (mm)	Wall thickness (mm)	S/S length (mm)	Thread	Flats (mm)	Weight (kg)	Part Number
76	4,0	1900	2 3/8"API REG	65	17,9	10-1016
76	4,0	2000	2 3/8"API REG	65	18,6	10-1017
76	4,0	3000	2 3/8"API REG	65	25,4	10-4000
76	4,0	3000	RD50-6	65	24,2	10-1013
76	6,3	500	2 3/8"API REG	65	8,7	10-2538
76	6,3	600	2 3/8"API REG	65	9,8	10-1368
76	6,3	750	2 3/8"API REG	65	11,4	10-2532
76	6,3	1000	2 3/8"API REG	65	14,1	10-1035
76	6,3	1200	2 3/8"API REG	65	16,3	10-1615
76	6,3	1350	2 3/8"API REG	65	17,9	10-3625
76	6,3	1500	2 3/8"API REG	65	19,5	10-1036
76	6,3	1600	2 3/8"API REG	65	20,6	10-1524
76	6,3	1700	2 3/8"API REG	65	21,7	10-1442
76	6,3	1800	2 3/8"API REG	65	22,7	10-1369
76	6,3	1830	2 3/8"API REG	65	23,1	10-1318
76	6,3	1850	2 3/8"API REG	65	23,3	10-2059
76	6,3	1900	2 3/8"API REG	65	23,8	10-1052
76	6,3	2000	2 3/8"API REG	65	24,9	10-1037
76	6,3	2100	2 3/8"API REG	65	26,0	10-1384
76	6,3	3000	2 3/8"API REG	65	35,7	10-1038
76	6,3	3048	2 3/8"API REG	65	36,2	10-1356
76	6,3	4000	2 3/8"API REG	65	46,5	10-1039
76	6,3	4500	2 3/8"API REG	65	51,9	10-1040
76	6,3	5000	2 3/8"API REG	65	57,3	10-1328
76	6,3	6000	2 3/8"API REG	65	68,1	10-1041
76	8,8	1000	2 3/8"API REG	65	17,1	10-2219
76	8,8	1500	2 3/8"API REG	65	24,4	10-2220
76	8,8	2000	2 3/8"API REG	65	31,7	10-2221
76	8,8	3000	2 3/8"API REG	65	46,3	10-2222
89	4,0	500	2 3/8"API REG	65	9,6	10-1771
89	4,0	1000	2 3/8"IF	65	14,5	10-1059
89	4,0	1000	2 3/8"API REG	65	13,8	10-1046
89	4,0	1000	2 7/8"API REG	65	14,6	10-1065
89	4,0	1000	RD70 - 4	65	13,0	10-1042
89	4,0	1500	2 3/8"IF	65	18,7	10-1060
89	4,0	1500	2 3/8"API REG	65	18,0	10-1047
89	4,0	1500	2 7/8"API REG	65	18,8	10-1066
89	4,0	1500	RD70 - 4	65	17,2	10-1043

We also have other dimensions, threads and lengths. Please contact us for more info.

Outer diameter (mm)	Wall thickness (mm)	S/S length (mm)	Thread	Flats (mm)	Weight (kg)	Part Number
89	4,0	2000	2 3/8"IF	65	22,9	10 -10 61
89	4,0	2000	2 3/8"API REG	65	22,2	10 -1050
89	4,0	2000	2 7/8"API REG	65	23,0	10 -10 67
89	4,0	2000	RD70 - 4	65	21,4	10 -10 44
89	4,0	3000	2 3/8"IF	65	31,3	10 -10 62
89	4,0	3000	2 3/8"API REG	65	30,5	10 -1051
89	4,0	3000	2 7/8"API REG	65	31,4	10 -10 68
89	4,0	3000	RD70 - 4	65	29,9	10 -10 45
89	6,3	500	2 3/8"API REG	65	10,9	10 -12 50
89	6,3	1000	2 3/8"IF	65	17,8	10 -1082
89	6,3	1000	2 3/8"API REG	65	17,3	10 -1076
89	6,3	1000	2 7/8"API REG	65	18,0	10 -1088
89	6,3	1500	2 3/8"IF	65	24,2	10 -1083
89	6,3	1500	2 3/8"API REG	65	23,7	10 -1077
89	6,3	1500	2 7/8"API REG	65	24,4	10 -1089
89	6,3	2000	2 3/8"IF	65	30,6	10 -108 4
89	6,3	2000	2 3/8"API REG	65	30,1	10 -1078
89	6,3	2000	2 7/8"API REG	65	30,8	10 -109 0
89	6,3	2500	2 3/8"API REG	65	36,5	10 -12 21
89	6,3	3000	2 3/8" IF	65	43,4	10 -1085
89	6,3	3000	2 3/8"API REG	65	42,9	10 -1079
89	6,3	3000	2 7/8"API REG	65	43,6	10 -1091
89	6,3	3000	RD70 - 4	65	42,3	10 -1072
89	6,3	4000	2 3/8" IF	65	56,2	10 -18 48
89	6,3	4000	2 3/8"API REG	65	55,7	10 -1316
89	6,3	5000	2 3/8" IF	65	69,0	10 -1959
89	6,3	5000	2 3/8"API REG	65	68,5	10 -12 8 6
89	6,3	6000	2 3/8" IF	65	81,8	10 -1087
89	6,3	6000	2 3/8"API REG	65	81,7	10 -1081
89	6,3	6000	2 7/8"API REG	65	82,0	10 -1093
89	8,8	500	2 3/8"API REG	65	11,8	10 -2122
89	8,8	1000	2 3/8"API REG	65	19,8	10 -1877
89	8,8	1500	2 3/8"API REG	65	27,8	10 -2 241
89	8,8	2000	2 3/8"API REG	65	35,7	10 -1611
89	8,8	3000	2 3/8"API REG	65	51,7	10 -15 6 4
89	8,8	4000	2 3/8"API REG	65	67,7	10 -4 0 07
89	8,8	5000	2 3/8"API REG	65	83,6	10 -317 7
89	8,8	6000	2 3/8"API REG	65	99,6	10 -2878

Outer diameter (mm)	Wall thickness (mm)	S/S length (mm)	Thread	Flats (mm)	Weight (kg)	Part Number
102	6,3	1000	2 7/8"API REG	75	23,6	10 -18 49
102	6,3	1500	2 7/8"API REG	75	31,0	10 -1850
102	6,3	2000	2 7/8"API REG	75	38,4	10 -1851
102	6,3	3000	2 7/8"API REG	75	53,2	10 -1852
102	6,3	4000	2 7/8"API REG	75	68,0	10 -1853
102	6,3	5000	2 7/8"API REG	75	82,8	10 -1761
102	6,3	6000	2 7/8"API REG	75	97,6	10 -185 4
114	6,3	500	3 1/2"API REG	95	18,0	10 -153 0
114	6,3	500	3 1/2" IF	95	18,5	10 -4135
114	6,3	750	3 1/2"API REG	95	22,2	10 -1531
114	6,3	750	3 1/2" IF	95	22,7	10 -413 4
114	6,3	1000	3 1/2"API REG	95	26,4	10 -113 2
114	6,3	1000	3 1/2" IF	95	26,9	10 -115 9
114	6,3	1500	3 1/2"API REG	95	34,8	10 -113 4
114	6,3	1500	3 1/2" IF	95	35,3	10 -116 0
114	6,3	2000	3 1/2"API REG	95	43,2	10 -113 8
114	6,3	2000	3 1/2" IF	95	43,7	10 -1161
114	6,3	3000	3 1/2"API REG	95	60,0	10 -113 9
114	6,3	3000	3 1/2" IF	95	60,5	10 -1632
114	6,3	4000	3 1/2"API REG	95	76,8	10 -176 2
114	6,3	4000	3 1/2" IF	95	77,3	10 -1491
114	6,3	5000	3 1/2"API REG	95	93,6	10 -1245
114	6,3	5000	3 1/2"IF	95	94,1	10 -17 27
114	6,3	6000	3 1/2"API REG	95	110,4	10 -1141
114	6,3	6000	3 1/2"IF	95	110,9	10 -116 4
114	8,8	500	3 1/2"API REG	95	19,4	10 -1617
114	8,8	500	3 1/2"IF	95	19,9	10 -4137
114	8,8	750	3 1/2"API REG	95	25,1	10 -12 33
114	8,8	750	3 1/2"IF	95	25,6	10 -413 6
114	8,8	1000	3 1/2"API REG	95	30,8	10 -117 1
114	8,8	1000	3 1/2"IF	95	31,3	10 -118 5
114	8,8	1500	3 1/2"API REG	95	42,3	10 -117 2
114	8,8	1500	3 1/2"IF	95	42,8	10 -118 6
114	8,8	2000	3 1/2"API REG	95	53,7	10 -117 3
114	8,8	2000	3 1/2"IF	95	54,2	10 -118 7
114	8,8	3000	3 1/2"API REG	95	76,6	10 -1174
114	8,8	3000	3 1/2"IF	95	77,1	10 -118 8

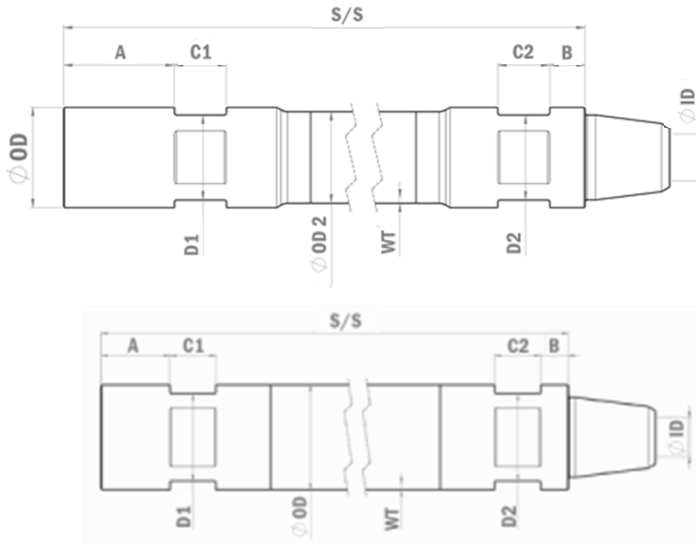
Outer diameter (mm)	Wall thickness (mm)	S/S length (mm)	Thread	Flats (mm)	Weight (kg)	Part Number
114	8,8	4000	3 1/2" API REG	95	99,5	10-13 4 4
114	8,8	4000	3 1/2" IF	95	10 0,0	10-413 8
114	8,8	5000	3 1/2" API REG	95	122,4	10-1955
114	8,8	5000	3 1/2" IF	95	122,9	10-1459
114	8,8	6000	3 1/2" API REG	95	145,3	10-117 6
114	8,8	6000	3 1/2" IF	95	145,8	10-119 0
127	6,3	1000	3 1/2" IF	95	35,5	10-1857
127	6,3	1000	3 1/2" API REG	95	36,5	10-13 0 0
127	6,3	15 0 0	3 1/2" IF	95	44,9	10-1858
127	6,3	15 0 0	3 1/2" API REG	95	45,9	10-13 0 1
127	6,3	2000	3 1/2" IF	95	54,3	10-1859
127	6,3	2000	3 1/2" API REG	95	55,3	10-1314
127	6,3	3000	3 1/2" IF	95	73,1	10-14 0 1
127	6,3	3000	3 1/2" API REG	95	74,1	10-1274
127	6,3	4000	3 1/2" IF	95	91,9	10-4139
127	6,3	4000	3 1/2" API REG	95	92,9	10-2091
127	6,3	5000	3 1/2" IF	95	110,7	10-20 6 3
127	6,3	5000	3 1/2" API REG	95	111,7	10-269 0
127	6,3	6000	3 1/2" IF	95	129,5	10-1370
127	6,3	6000	3 1/2" API REG	95	130,5	10-13 0 7
127	8,8	1000	3 1/2" IF	95	39,8	10-18 6 7
127	8,8	1000	3 1/2" API REG	95	41,1	10-13 0 8
127	8,8	15 0 0	3 1/2" IF	95	52,6	10-1814
127	8,8	15 0 0	3 1/2" API REG	95	53,9	10-13 0 9
127	8,8	2000	3 1/2" IF	95	65,5	10-18 6 8
127	8,8	2000	3 1/2" API REG	95	66,8	10-1310
127	8,8	3000	3 1/2" IF	95	91,2	10-18 6 9
127	8,8	3000	3 1/2" API REG	95	92,5	10-1311
127	8,8	4000	3 1/2" IF	95	116,9	10-4142
127	8,8	4000	3 1/2" API REG	95	118,2	10-414 0
127	8,8	5000	3 1/2" IF	95	142,6	10-20 6 2
127	8,8	5000	3 1/2" API REG	95	143,9	10-4141
127	8,8	6000	3 1/2" IF	95	168,3	10-1870
127	8,8	6000	3 1/2" API REG	95	169,6	10-1312
14 0	8,8	500	3 1/2" IF	12 0	33,2	10-414 4
14 0	8,8	500	3 1/2" API REG	12 0	34,4	10-4143
14 0	8,8	500	4 1/2" API REG	12 0	32,3	10-17 2 4

Outer diameter (mm)	Wall thickness (mm)	S/S length (mm)	Thread	Flats (mm)	Weight (kg)	Part Number
140	8,8	1000	3 1/2" IF	12 0	47,4	10 -1874
140	8,8	1000	3 1/2" API REG	12 0	48,6	10 -1416
140	8,8	1000	4 1/2" API REG	12 0	46,5	10 -132 0
140	8,8	15 0 0	3 1/2" IF	12 0	61,6	10 -1420
140	8,8	15 0 0	3 1/2" API REG	12 0	62,8	10 -1418
140	8,8	15 0 0	4 1/2" API REG	12 0	60,7	10 -1321
140	8,8	2000	3 1/2" IF	12 0	75,8	10 -1875
140	8,8	2000	3 1/2" API REG	12 0	77,0	10 -142 5
140	8,8	2000	4 1/2" API REG	12 0	74,9	10 -132 2
140	8,8	3000	3 1/2" IF	12 0	104,2	10 -1518
140	8,8	3000	3 1/2" API REG	12 0	105,4	10 -1426
140	8,8	3000	4 1/2" API REG	12 0	103,3	10 -132 3
140	8,8	4000	3 1/2" IF	12 0	132,6	10 -1876
140	8,8	4000	3 1/2" API REG	12 0	133,8	10 -1871
140	8,8	4000	4 1/2" API REG	12 0	131,7	10 -157 2
140	8,8	5000	3 1/2" IF	12 0	161,0	10 -1519
140	8,8	5000	3 1/2" API REG	12 0	162,2	10 -1872
140	8,8	5000	4 1/2" API REG	12 0	160,1	10 -1495
140	8,8	6000	3 1/2" IF	12 0	189,4	10 -152 0
140	8,8	6000	3 1/2" API REG	12 0	190,6	10 -1873
140	8,8	6000	4 1/2" API REG	12 0	188,5	10 -1324

COMMON LARGE DIAMETER PIPES AND THREADS

152	10 -25	500-12000	Depends on application	On Request
159	10 -25	500-12000	Depends on application	On Request
168	10 -25	500-12000	Depends on application	On Request
178	10 -25	500-12000	Depends on application	On Request
194	12-25	500-12000	Depends on application	On Request
219	12-25	500-12000	Depends on application	On Request
273	12-25	500-12000	Depends on application	On Request
305	12-25	500-12000	Depends on application	On Request
323	12-25	500-12000	Depends on application	On Request
406	12-25	500-12000	Depends on application	On Request

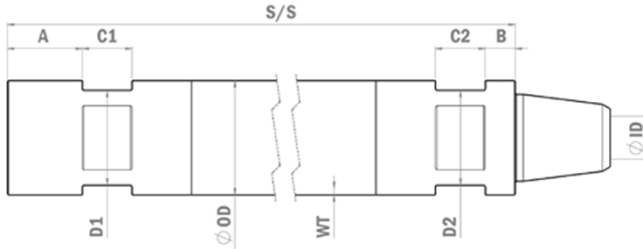
Diameter: **OD = 70–140 mm**
 Length: **S/S = 500–12000 mm**



Outer diameter (mm)	Wall thickness (mm)	S/S length (mm)	Thread	Flats (mm)	Weight (kg)	Part Number
76/70	4	1000	2 3/8"API REG	65	12,5	10 - 4183
76/70	4	15 0 0	2 3/8"API REG	65	16,5	10 - 418 4
76/70	4	2000	2 3/8"API REG	65	20,5	10 - 4 012
76/70	4	3000	2 3/8"API REG	65	28,5	10 -3956
76	4	3000	2 3/8"API REG	65	31,8	10 - 4121
76	6,3	3000	2 3/8"API REG	65	40,8	10 - 412 2

Standard Drill Collar

Diameter: **OD = 89 mm**
 Length: **S/S = 1000–3000 mm**



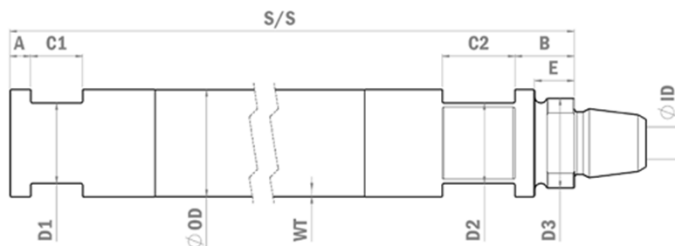
Outer diameter (mm)	Wall thickness (mm)	S/S length (mm)	Thread box	Thread pin	Flats (mm)	Weight (kg)	Part Number
89	16	1000	2 3/8"API REG	2 3/8"API REG	65	30,2	12-10 5 0
89	16	1300	3 1/2"API REG	2 3/8"API REG	95/65	41,9	12-152 5
89	16	1500	3 1/2"API REG	2 3/8"API REG	95/65	47,7	12-10 0 9
89	16	1500	2 3/8"API REG	2 3/8"API REG	65	44,6	12-10 0 5
89	16	1600	2 3/8"API REG	2 3/8"API REG	65	47,5	12-10 5 3
89	16	1650	2 3/8"API REG	2 3/8"API REG	65	49,0	12-10 5 6
89	16	1700	2 3/8"API REG	2 3/8"API REG	65	50,4	12-10 0 6
89	16	1700	3 1/2"API REG	2 3/8"API REG	95/65	53,4	12-1074
89	16	1750	2 3/8"API REG	2 3/8"API REG	65	51,8	12-10 6 3
89	16	1800	2 3/8"API REG	2 3/8"API REG	65	53,3	12-10 4 7
89	16	1800	3 1/2"API REG	2 3/8"API REG	95/65	56,3	12-1049
89	16	1850	2 3/8"API REG	2 3/8"API REG	65	54,7	12-10 4 0
89	16	1900	2 3/8"API REG	2 3/8"API REG	65	56,2	12-10 4 1
89	16	1900	3 1/2"API REG	2 3/8"API REG	95/65	59,2	12-102 3
89	16	1950	2 3/8"API REG	2 3/8"API REG	65	57,6	12-10 3 7
89	16	1960	2 3/8"API REG	2 3/8"API REG	65	57,9	12-1589
89	16	2000	3 1/2"API REG	2 3/8"API REG	95/65	62,1	12-10 5 2
89	16	2000	2 3/8"API REG	2 3/8"API REG	65	59,0	12-10 0 7
89	16	2050	2 3/8"API REG	2 3/8"API REG	65	60,5	12-12 9 8
89	16	2100	2 3/8"API REG	2 3/8"API REG	65	61,9	12-1088
89	16	2150	2 3/8"API REG	2 3/8"API REG	65	63,4	12-1511
89	16	2200	2 3/8"API REG	2 3/8"API REG	65	64,8	12-107 7
89	16	2250	2 3/8"API REG	2 3/8"API REG	65	65,5	12-1080
89	16	3000	2 3/8"API REG	2 3/8"API REG	65	87,8	12-153 0

We also have other dimensions, threads and lengths. Please contact us for more info.

ATLAS COPCO

CM (695/760/780)

Diameter: OD = 76–102 mm
Length: S/S = 2700–5000 mm

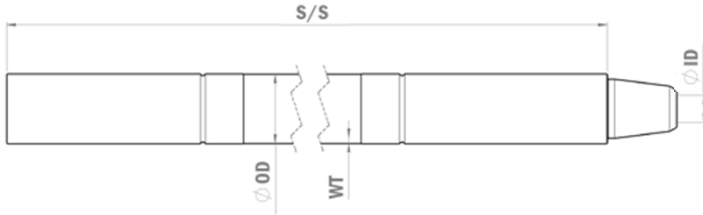


Outer diameter (mm)	Wall thickness (mm)	S/S length (mm)	Thread box	Thread pin	Flats (mm)	Weight (kg)	Part Number
76	6,3	2700	2"Z	2"Z	CM	33,6	10-17 8 5
76	6,3	4000	2"Z	2"Z	CM	45,5	10-1691
76	6,3	5000	2"Z	2"Z	CM	56,3	10-2750
76	8,8	2900	2 3/8"API REG	2"Z	CM	46,6	10-2 311
76	8,8	4000	2"Z	2"Z	CM	61,6	10-4145
76	8,8	4600	2 3/8"API REG	2"Z	CM	71,4	10-2753
76	12,5	4000	2"Z	2"Z	CM	80,6	10-238 0
89	6,3	4000	2 1/2 " Z	2 1/2 " Z	CM	57,8	10-57699050
89	6,3	5000	2 1/2 " Z	2 1/2 " Z	CM	70,6	10-2752
89	8,8	2400	3 1/2 " API REG	2 1/2 " Z	CM	49,6	10-2124
89	8,8	2700	2 3/8"API REG	2 1/2 " Z	CM	60,0	10-2 411
89	8,8	2700	2 3/8"API REG	2 1/2 " Z	CM	49,6	10-576990 43
89	8,8	4400	3 1/2 " API REG	2 1/2 " Z	CM	81,5	10-2749
89	8,8	4600	2 3/8"API REG	2 1/2 " Z	CM	80,0	10-2751
102	6,3	2435	2 1/2 " Z	2 1/2 " Z	CM	44,0	10-2381
102	6,3	4000	2 1/2 " Z	2 1/2 " Z	CM	66,9	10-1516
102	6,3	5000	2 1/2 " Z	2 1/2 " Z	CM	81,7	10-2624
102	8,8	2700	3 1/2 " API REG	2 1/2 " Z	CM	65,4	10-2626
102	8,8	4400	3 1/2 " API REG	2 1/2 " Z	CM	99,6	10-2625
102	12,5	4000	3 1/2 " API REG	2 1/2 " Z	CM	118,0	10-2382

ATLAS COPCO

ROC (F6/L6/L8/ SmartRoc/FlexiRoc)

Diameter: **OD = 76–140 mm**
 Length: **S/S = 1800–6000 mm**



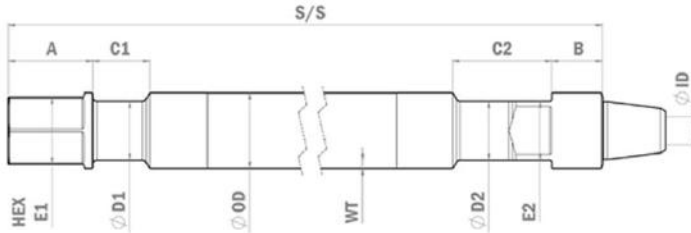
Outer diameter (mm)	Wall thickness (mm)	S/S length (mm)	Thread	Flats (mm)	Weight (kg)	Part Number
76	4	4000	2 3/8" API REG	ROC	36,5	10 -12 27
76	6,3	18 0 0	2 3/8" API REG	ROC	26,8	10 -228 0
76	6,3	3700	2 3/8" API REG	ROC	47,3	10 -14 0 4
76	6,3	4000	2 3/8" API REG	ROC	50,5	10 -13 03
76	6,3	5000	2 3/8" API REG	ROC	61,3	10 -13 02
76	6,3	6000	2 3/8" API REG	ROC	72,1	10 -152 9
89	6,3	4000	2 3/8" API REG	ROC	62,5	10 -133 8
89	6,3	5000	2 3/8" API REG	ROC	75,3	10 -12 07
89	6,3	6000	2 3/8" API REG	ROC	88,1	10 -169 4
89	8,8	4000	2 3/8" API REG	ROC	73,9	10 -14 89
89	8,8	5000	2 3/8" API REG	ROC	89,9	10 -1926
89	8,8	6000	2 3/8" API REG	ROC	105,9	10 -1833
89	8,8	6000	2 7/8" API REG	ROC	106,1	10 -415 0
89	8,8	6000	2 3/8" IF	ROC	105,6	10 -20 67
102	6,3	4000	2 7/8" API REG	ROC	75,8	10 -2778
102	6,3	5000	2 7/8" API REG	ROC	90,6	10 -126 6
102	6,3	6000	2 7/8" API REG	ROC	105,4	10 -1618
102	8,8	4000	2 7/8" API REG	ROC	94,4	10 -3550
102	8,8	5000	2 7/8" API REG	ROC	114,5	10 -18 85
102	8,8	6000	2 7/8" API REG	ROC	134,6	10 -26 86

Outer diameter (mm)	Wall thickness (mm)	S/S length (mm)	Thread	Flats (mm)	Weight (kg)	Part Number
114	6,3	4000	3 1/2" API REG	ROC	87,6	10-2223
114	6,3	5000	3 1/2" API REG	ROC	104,4	10-2276
114	6,3	6000	3 1/2" API REG	ROC	121,2	10-1238
114	8,8	4000	3 1/2" API REG	ROC	109,2	10-3860
114	8,8	5000	3 1/2" API REG	ROC	132,1	10-1886
114	8,8	6000	3 1/2" API REG	ROC	155	10-2072
127	6,3	5000	3 1/2" API REG	ROC	122,9	10-4152
127	6,3	6000	3 1/2" API REG	ROC	141,7	10-1533
127	8,8	5000	3 1/2" API REG	ROC	153,4	10-4151
127	8,8	6000	3 1/2" API REG	ROC	179,1	10-1922
127	12,5	5000	3 1/2" API REG	ROC	198,4	10-4153
127	12,5	6000	3 1/2" API REG	ROC	233,7	10-3557
140	8,8	5000	4 1/2" API REG	ROC	166,8	10-2818
140	8,8	6000	4 1/2" API REG	ROC	195,2	10-1834
140	12,5	5000	4 1/2" API REG	ROC	216,9	10-4154
140	12,5	6000	4 1/2" API REG	ROC	256,1	10-3855

ATLAS COPCO

T4 (DM30/45/50, T4, RD20)

Diameter: **OD = 102–194 mm**
 Length: **S/S = 6096–10668 mm**



Outer diameter (mm)	Wall thickness (mm)	S/S length (mm)	Thread	Flats (mm)	Weight (kg)	Part Number
102	8,8	7620	2 7/8" API REG	T4	168,5	10-2413
102	8,8	9144	2 7/8" API REG	T4	199,2	10-1914
102	19	8077	2 7/8" API REG	T4	301,0	10-2390
102	19	9144	2 7/8" API REG	T4	338,0	10-1988
114	8,8	6096	2 7/8" IF	T4	151,3	10-1981
114	8,8	6096	3 1/2" API REG	T4	154,3	10-1620
114	8,8	7620	2 7/8" IF	T4	186,2	10-2420
114	8,8	7620	3 1/2" API REG	T4	189,2	10-1228
114	8,8	9144	2 7/8" IF	T4	221,1	10-1712
114	8,8	9144	3 1/2" API REG	T4	224,1	10-1841
114	8,8	9144	3" BECO	T4	225,7	10-2534
114	12,5	6553	3 1/2" API REG	T4	219,3	10-1484
114	12,5	7620	3 1/2" API REG	T4	250,6	10-1486
114	12,5	9144	3 1/2" API REG	T4	298,4	10-1515
114	12,5	10668	3 1/2" API REG	T4	346,3	10-2332
114	16	6553	3 1/2" API REG	T4	264,9	10-2310
114	16	8534	3 1/2" API REG	T4	341,8	10-2665
114	19	7620	3 1/2" API REG	T4	360,2	10-2899
114	19	8077	3 1/2" API REG	T4	381,5	10-1662
114	19	9144	3 1/2" API REG	T4	428,8	10-1657
114	19	10668	3 1/2" API REG	T4	499,7	10-3108
127	8,8	6553	3 1/2" API REG	T4	190,5	10-2393
127	8,8	7620	3 1/2" API REG	T4	214,4	10-2029
127	8,8	9144	3 1/2" API REG	T4	253,6	10-1681
127	8,8	9144	3 1/2" BECO	T4	256,3	10-2094

We also have other dimensions, threads and lengths. Please contact us for more info.

Outer diameter (mm)	Wall thickness (mm)	S/S length (mm)	Thread	Flats (mm)	Weight (kg)	Part Number
127	12,5	6553	3 1/2 " API REG	T4	249,8	10 -19 6 8
127	12,5	6553	3 1/2 " BECO	T4	250,4	10 -2424
127	12,5	7620	3 1/2 " API REG	T4	282,2	10 -1593
127	12,5	7620	3 1/2 " BECO	T4	286,7	10 -234 6
127	12,5	8077	3 1/2 " API REG	T4	303,6	10 -1975
127	12,5	8077	3 1/2 " BECO	T4	304,2	10 -239 4
127	12,5	914 4	3 1/2 " API REG	T4	336,0	10 -16 85
127	12,5	914 4	3 1/2 " BECO	T4	340,5	10 -2327
127	19	10 6 68	3 1/2 " API REG	T4	389,8	10 -2320
127	19	10 6 68	3 -1/2 " BECO	T4	394,3	10 -2322
127	19	6553	3 1/2 " API REG	T4	364,0	10 -2309
127	19	6553	3 1/2 " BECO	T4	366,5	10 -230 8
127	19	7620	3 1/2 " API REG	T4	414 ,1	10 -16 82
127	19	7620	3 1/2 " BECO	T4	418 ,7	10 -2347
127	19	8077	3 1/2 " API REG	T4	444,6	10 -2326
127	19	8077	3 -1/2 " BECO	T4	446,6	10 -3877
127	19	914 4	3 1/2 " API REG	T4	494,7	10 -16 83
127	19	914 4	3 1/2 " BECO	T4	499,3	10 -2328
127	19	10 6 68	3 1/2 " API REG	T4	575,3	10 -2321

127	19	10 6 68	3 1/2 " BECO	T4	579,9	10-2323
14 0	12,5	6299	4"FH	T4	273,0	10 -2672
14 0	12,5	6299	3 1/2 " BECO	T4	2 77, 5	10 -239 6
14 0	12,5	7620	4"FH	T4	319,8	10 -19 83
14 0	12,5	7620	3 1/2 " BECO	T4	325,0	10 -19 82
14 0	12,5	7823	3 1/2 " BECO	T4	3 3 7, 3	10 -2395
14 0	12,5	914 4	4"FH	T4	384,4	10 -2733
14 0	19	914 4	3 1/2 " BECO	T4	389,0	10 -19 85
14 0	19	10 6 68	3 1/2 " BECO	T4	444,5	10 -2324
14 0	19	6299	3 1/2 " BECO	T4	398,4	10 -2 315
14 0	19	7620	3 1/2 " BECO	T4	472, 3	10 -176 5
14 0	19	8077	3 1/2 " BECO	T4	499,3	10 -3785
14 0	25	914 4	3 1/2 " BECO	T4	562,2	10 -1810
14 0	25	10 6 68	3 1/2 " BECO	T4	652,2	10-2325
14 0		6300	3 1/2 " BECO	T4	464,5	10 -2316
14 0		7620	3 1/2 " BECO	T4	554,0	10 -2 314

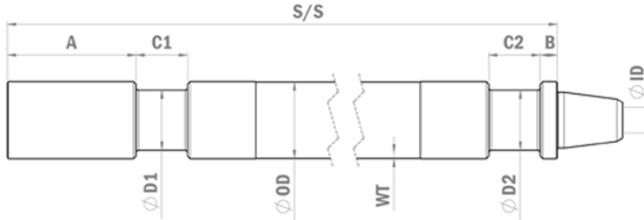
14 0	25	914 4	3 1/2 " BECO	T4	6 61, 8	10 -2329
------	----	-------	--------------	----	---------	----------

COMMON LARGER DIAMETERS

159	12-2 5		4" BECO	T4		On Request
16 8	12-2 5		4" BECO	T4		On Request
17 8	12-2 5		4 1/2" BECO	T4		On Request
19 4	12-2 5		5 1/4" BECO	T4		On Request

ATLAS COPCO SIMBA Underground

Diameter: **OD = 76–114 mm**
Length: **S/S = 1500–1875 mm**

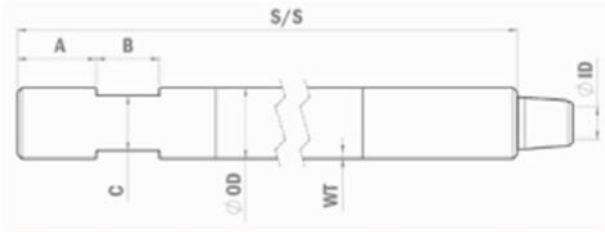


Outer diameter (mm)	Wall thickness (mm)	S/S length (mm)	Thread box	Thread pin	Flats (mm)	Weight (kg)	Part Number
76	6,3	1800	2 3/8"API REG	2 3/8"API REG	SIMBA	25,5	10 - 424 0
89	6,3	1500	2 3/8"API REG	2 3/8"API REG	SIMBA	27,9	10 - 20 82
89	6,3	1800	2 3/8"API REG	2 3/8"API REG	SIMBA	31,7	10 - 414 6
89	8,8	1800	2 3/8"API REG	3 1/2"API REG	SIMBA	37,8	10 - 3545
102	6,3	1500	2 7/8"API REG	2 7/8"API REG	SIMBA	34,3	10 - 4149
102	6,3	1800	2 7/8"API REG	2 7/8"API REG	SIMBA	38,8	10 - 414 8
114	6,3	1500	3 1/2"API REG	3 1/2"API REG	SIMBA	41,1	10 - 4147
114	6,3	1875	3 1/2"API REG	3 1/2"API REG	SIMBA	47,4	10-2960

ATLAS COPCO

**TH60 (T2/T3/TH60/
75E/10 0A)**

Diameter: **OD = 89–114 mm**
Length: **S/S = 6096 mm**

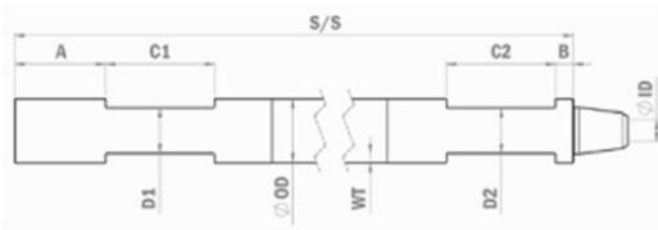


Outer diameter (mm)	Wall thickness (mm)	S/S length (mm)	Thread	Flats (mm)	Weight (kg)	Part Number
89	8,8	6096	2 3/8" IF (NC26)	TH60	105,3	10-12 81
114	8,8	6096	2 7/8" IF	TH60	157,1	10-1713
114	8,8	6096	3 1/2" API REG	TH60	157,7	10-2419
114	8,8	6096	3 1/2" FH	TH60	156,2	10-15 44
114	8,8	6096	3 1/2" IF	TH60	155,8	10-2417

COPCO

5

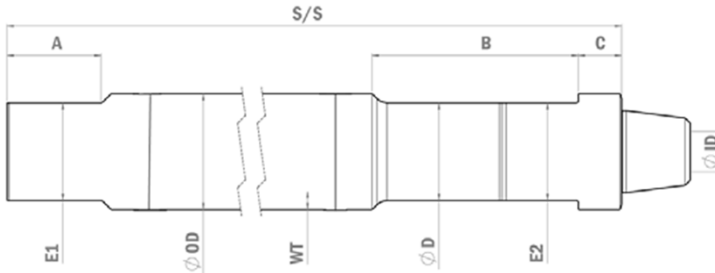
Diameter: **OD = 89–102 mm**
Length: **S/S = 6400–9144 mm**



89	12,5	8077	2 3/8" API REG	DM25	199,0	10-24 49
89	12,5	9144	2 3/8" API REG	DM25	224,1	10-2387
102	8,8	6400	2 7/8" API REG	DM25	144,3	10-2415
102	8,8	7620	2 7/8" API REG	DM25	170,6	10-2389

ATLAS COPCO PIT-VIPER/DMM

Diameter: **OD = 114–343 mm**
Length: **S/S = 9144–12192 mm**



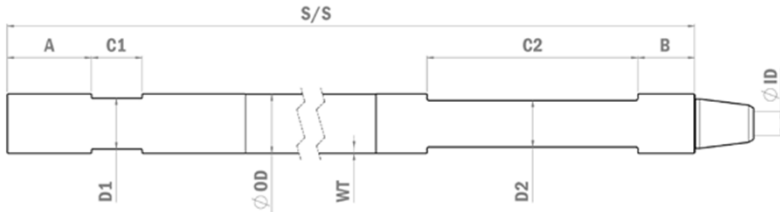
Outer diameter (mm)	Wall thickness (mm)	S/S length (mm)	Thread	Flats (mm)	Weight (kg)	Part Number
114	12	9144	3 1/2" API REG	PIT-VIPER	304,0	10-36 61
114	12	10 668	3 1/2" API REG	PIT-VIPER	351,9	10-36 62
114	19	11378	3" BECO	PIT-VIPER	543,9	10-3268
114	19	12192	3" BECO	PIT-VIPER	581,8	10-36 42

COMMON LARGER DIAMETERS

127	12-25		3 1/2" API REG	PIT-VIPER		On Request
127	12-25		3 1/2" BECO	PIT-VIPER		On Request
127	12-25		4 1/8" DIBH	PIT-VIPER		On Request
140	12-25		3 1/2" BECO	PIT-VIPER		On Request
140	12-25		4 1/8" DIBH	PIT-VIPER		On Request
159	12-25		4" BECO	PIT-VIPER		On Request
178	12-25		4 1/2" BECO	PIT-VIPER		On Request
194	12-25		5 1/4" BECO	PIT-VIPER		On Request
203	12-25		5 1/4" BECO	PIT-VIPER		On Request
219	12-38		6" BECO	PIT-VIPER		On Request
235	12-38		6" BECO	PIT-VIPER		On Request
273	12-38		8" BECO	PIT-VIPER		On Request
324	12-38		8" BECO	PIT-VIPER		On Request
343	12-38		8" BECO	PIT-VIPER		On Request
343	12-38		10" BECO	PIT-VIPER		On Request

DRILTECH-GATOR

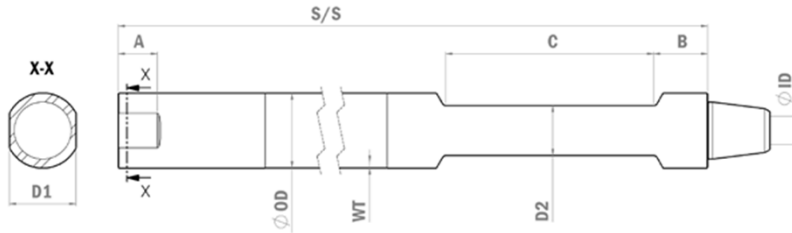
Diameter: OD = 76-114 mm
Length: S/S = 2896-7650 mm



Outer diameter (mm)	Wall thickness (mm)	S/S length (mm)	Thread	Flats (mm)	Weight (kg)	Part Number
76	6,3	2896	2 3/8"API REG	G ATO R	42,6	10-13 8 3
76	6,3	3962	2 3/8"API REG	G ATO R	5 4,1	10-13 8 1
76	12,5	7650	2 3/8"API REG	G ATO R	15 4,3	10-1695
89	8,8	2896	2 3/8"API REG	G ATO R	63,5	10-1626
89	8,8	2896	2 7/8"API REG	G ATO R	62,7	10-169 8
89	8,8	3962	2 3/8"API REG	G ATO R	80,5	10-1627
89	8,8	3962	2 7/8"API REG	G ATO R	79,7	10-169 9
89	8,8	6096	2 3/8"IF	G ATO R	108,4	10-14 6 0
89	12,5	7650	2 3/8"API REG	G ATO R	192,1	10-143 4
102	8,8	2896	2 7/8"API REG	G ATO R	80,3	10-1628
102	8,8	3962	2 3/8"IF	G ATO R	99,8	10-18 0 6
102	8,8	3962	2 7/8"API REG	G ATO R	101,8	10-1629
114	8,8	2896	3 1/2"API REG	G ATO R	102,9	10-1630
114	8,8	3962	3 1/2"API REG	G ATO R	12 7,3	10-1631
114	12,5	7650	BECO 3"	G ATO R	268,8	10-142 2

DRILTECH

Diameter: **OD = 89–219 mm**
 Length: **S/S = 6010–9144 mm**



Outer diameter (mm)	Wall thickness (mm)	S/S length (mm)	Thread	Flats (mm)	Weight (kg)	Part Number
89	8,8	6010	2 3/8"IF	DRILTECH	109,0	10 -1616
89	8,8	6096	2 3/8"IF	DRILTECH	110,4	10 -16 43
89	12,5	7620	2 3/8"IF	DRILTECH	187,2	10-1888
89	12,5	914 4	2 3/8"IF	DRILTECH	223,2	10 -15 63
102	8,8	6010	2 3/8"IF	DRILTECH	139,6	10 -2033
102	8,8	7620	2 7/8"API REG	DRILTECH	174,6	10 -3793
102	8,8	914 4	2 3/8"IF	DRILTECH	202,7	10 -20 41
102	8,8	914 4	2 7/8"API REG	DRILTECH	205,3	10 -319 6
102	12,5	7620	2 7/8"API REG	DRILTECH	222,6	10 -209 6
102	12,5	914 4	2 7/8"API REG	DRILTECH	264,5	10 -2563
114	8,8	6096	2 7/8"IF	DRILTECH	158,4	10 -1714
114	8,8	6096	3 1/2"API REG	DRILTECH	161,5	10 -1512
114	8,8	7620	2 7/8"IF	DRILTECH	193,3	10 -1458
114	8,8	7620	3 1/2"API REG	DRILTECH	196,4	10 -142 3
114	8,8	914 4	2 7/8"IF	DRILTECH	228,2	10 -2351
114	8,8	914 4	3 1/2"API REG	DRILTECH	231,3	10 -1597
114	12,5	7620	3 1/2"API REG	DRILTECH	256,3	10 -149 4
114	12,5	914 4	3 1/2"API REG	DRILTECH	304,2	10-1808
114	19	7620	3 1/2"API REG	DRILTECH	362,4	10 -18 00
114	19	914 4	3 1/2"API REG	DRILTECH	433,3	10 -3534

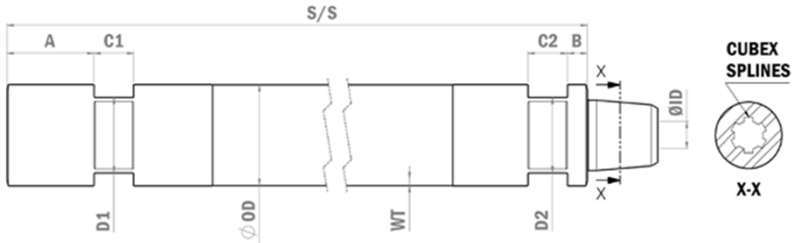
Outer diameter (mm)	Wall thickness (mm)	S/S length (mm)	Thread	Flats (mm)	Weight (kg)	Part Number
127	8,8	7620	3 1/2"API REG	DRILTECH	227,3	10-1969
127	8,8	9144	3 1/2"API REG	DRILTECH	266,5	10-1974
127	12,5	7620	3 1/2"API REG	DRILTECH	290,7	10-1746
127	12,5	7620	3 1/2"BECCO	DRILTECH	294,0	10-2501
127	12,5	9144	3 1/2"API REG	DRILTECH	344,5	10-1747
127	12,5	9144	3 1/2"BECCO	DRILTECH	347,8	10-2036
127	19	7620	3 1/2"API REG	DRILTECH	418,4	10-3535
127	19	7620	3 1/2"BECCO	DRILTECH	421,4	10-1748
127	19	9144	3 1/2"API REG	DRILTECH	499,0	10-1600
127	19	9144	3 1/2"BECCO	DRILTECH	502,0	10-2295
140	12,5	9144	3 1/2"API REG	DRILTECH	385,0	10-2546
140	12,5	9144	3 1/2"BECCO	DRILTECH	396,4	10-2664
140	12,5	9144	4"FH	DRILTECH	392,1	10-3620
140	19	7620	3 1/2"BECCO	DRILTECH	475,0	10-1749
140	19	9144	3 1/2"BECCO	DRILTECH	565,0	10-1801

COMMON LARGER DIAMETERS

152	12-25		4" BECCO	DRILTECH		On Request
159	12-25		4" BECCO	DRILTECH		On Request
165	12-25		4" BECCO	DRILTECH		On Request
168	12-25		4" BECCO	DRILTECH		On Request
178	12-25		4 1/2" BECCO	DRILTECH		On Request
194	12-25		5 1/4" BECCO	DRILTECH		On Request
203	12-25		5 1/4" BECCO	DRILTECH		On Request
219	12-38		5 1/4" BECCO	DRILTECH		On Request

CUBEX/UG/ V-30/QXR (with splines)

Diameter: OD = 76–127 mm
Length: S/S = 1196–6096 mm

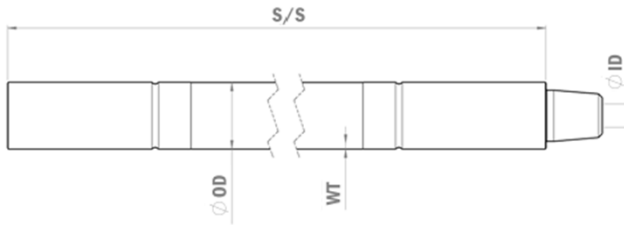


Outer diameter (mm)	Wall thickness (mm)	S/S length (mm)	Thread	Flats (mm)	Weight (kg)	Part Number
76	6,3	1829	#19	CUBEX	24,3	10 -2263
76	6,3	3048	#19	CUBEX	37,4	10 -2038
79	6,3	1219	#21	CUBEX	17,6	10 -162 5
79	6,3	1524	#21	CUBEX	21,1	10 -16 69
79	6,3	1829	#21	CUBEX	24,6	10 -126 5
89	6,3	1219	#21	CUBEX	21,7	10 -13 87
89	6,3	1219	#24	CUBEX	21,0	10 -1678
89	6,3	1524	#21	CUBEX	25,6	10 -13 8 8
89	6,3	1524	#24	CUBEX	24,9	10 -139 9
89	6,3	1829	#21	CUBEX	29,5	10 -126 4
89	6,3	1829	#24	CUBEX	28,8	10 -1270
102	6,3	1219	#24	CUBEX	27,3	10 -13 8 9
102	6,3	1524	#24	CUBEX	31,8	10 -139 0
102	6,3	1828	#24	CUBEX	36,3	10 -1393
102	8,8	6096	#24	CUBEX	130,5	10 -2092
102	12,5	4877	#24	CUBEX	141,1	10 -2115
102	12,5	6096	#24	CUBEX	174,6	10 -2110
114	6,3	1196	#28	CUBEX	31,2	10 -2298
114	6,3	1219	#28	CUBEX	31,6	10 -1679
114	6,3	1524	#28	CUBEX	36,7	10 -1392
114	6,3	1829	#28	CUBEX	41,8	10 -18 0 4

Outer diameter (mm)	Wall thickness (mm)	S/S length (mm)	Thread	Flats (mm)	Weight (kg)	Part Number
114	8,8	6096	#28	CUBEX	15 6,2	10 -2795
114	12,5	4877	#28	CUBEX	163,8	10 -2199
114	12,5	6096	#28	CUBEX	202,1	10 -2031
127	6,3	1219	#28	CUBEX	42,3	10 -3296
127	6,3	1524	#28	CUBEX	48,0	10 -2522
127	6,3	1829	#28	CUBEX	53,8	10 -1262
127	8,8	1524	#28	CUBEX	56,4	10 -3240
127	8,8	1829	#28	CUBEX	64,3	10 -29 42
127	10	1219	#28	CUBEX	51,6	10 -278 0
127	10	1524	#28	CUBEX	60,4	10 -3531
127	12,5	4877	#28	CUBEX	186,6	10 -3232
127	12,5	6096	#28	CUBEX	229,6	10 -318 0

QXR (TJB O) (no splines)

Diameter: **OD = 89–140 mm**
Length: **S/S = 4877–6096 mm**

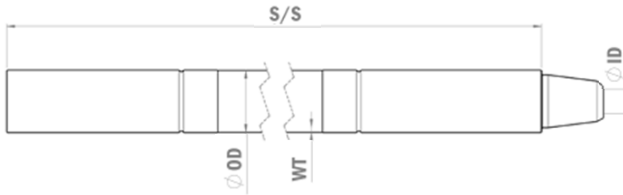


Outer diameter (mm)	Wall thickness (mm)	S/S length (mm)	Thread	Flats (mm)	Weight (kg)	Part Number
89	8,8	5000	2 3/8"API REG	TJB O	90,5	10 - 4157
89	8,8	6000	2 3/8"API REG	TJB O	10 6,4	10 - 415 6
89	8,8	6096	2 3/8"API REG	TJB O	107,9	10 - 4155
89	8,8	6096	#24	TJB O	107,3	10 -3730
89	12,5	6096	2 3/8"API REG	TJB O	150,8	10 -3631
89	12,5	6096	#24	TJB O	150,2	10 -2950
89	19	4877	2 3/8"API REG	TJB O	167,4	10 -3630
89	19	4877	#24	TJB O	168,0	10 -2951
102	6,3	6096	#24	TJB O	107,0	10 -3554
102	8,8	5000	2 7/8"API REG	TJB O	115,2	10 - 415 8
102	8,8	6000	2 7/8"API REG	TJB O	135,3	10 - 4159
102	8,8	6096	#24	TJB O	137,4	10 -2759
102	12,5	4877	#24	TJB O	144,6	10 -36 4 8
102	12,5	6096	#24	TJB O	178,1	10 -2983
102	19	4877	#24	TJB O	202,2	10 -29 63
102	19	6096	#24	TJB O	251,3	10 -3689
114	8,8	5000	3 1/2"API REG	TJB O	133,4	10 - 416 0
114	8,8	6000	3 1/2"API REG	TJB O	156,3	10 - 4161
114	12,5	6096	3 1/2"API REG	TJB O	206,4	10 -3637
114	19	4877	3 1/2"API REG	TJB O	234,6	10 -3636

Outer diameter (mm)	Wall thickness (mm)	S/S length (mm)	Thread	Flats (mm)	Weight (kg)	Part Number
127	8,8	4877	#28	TJ B O	151,4	10 -320 0
127	8,8	6000	3 1/2" BECO	TJ B O	179,8	10 -3865
127	8,8	6096	#28	TJ B O	182,7	10 -3201
127	12	4877	3 1/2" API REG	TJ B O	199,5	10-3638
127	12	4877	3 1/2" BECO	TJ B O	198,9	10 -2991
127	12	6096	3 1/2" API REG	TJ B O	238,6	10 -326 4
127	12	6096	3 1/2" BECO	TJ B O	237,7	10 -299 0
127	19	4877	3 1/2" BECO	TJ B O	285,6	10 -3112
127	19	6096	3 1/2" API REG	TJ B O	286,5	10 -3265
140	8,8	6000	4 1/2" API REG	TJ B O	201,3	10 -3191
140	8,8	6000	3 1/2" BECO	TJ B O	204,8	10 -3655
140	8,8	6000	4" BECO	TJ B O	204,7	10 -3729
140	12	4800	4 1/2" API REG	TJ B O	214,5	10 -3298
140	12	4800	3 1/2" BECO	TJ B O	218,0	10 -3639
140	12	6000	4 1/2" API REG	TJ B O	261,6	10 -319 4
140	12	6000	3 1/2" BECO	TJ B O	265,1	10 -326 6

DI (TITON/BPI)

Diameter: **OD = 76–140 mm**
 Length: **S/S = 3000–7500 mm**

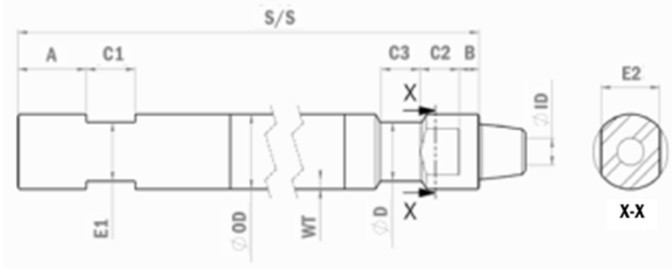


Outer diameter (mm)	Wall thickness (mm)	S/S length (mm)	Thread	Flats (mm)	Weight (kg)	Part Number
76	4	3000	2 3/8"API REG	DI/BPI	33,2	10 - 4162
76	6,3	3000	2 3/8"API REG	DI/BPI	42,6	10 -2867
76	6,3	4000	2 3/8"API REG	DI/BPI	53,4	10-508616
76	6,3	5000	2 3/8"API REG	DI/BPI	64,2	10-508618
76	6,3	6000	2 3/8"API REG	DI/BPI	75,0	10 -286 8
76	8,8	5000	2 3/8"API REG	DI/BPI	80,8	10 -3285
76	8,8	6000	2 3/8"API REG	DI/BPI	95,4	10 -328 4
89	4	3000	2 3/8"API REG	DI/BPI	45,6	10 -3 815
89	4	4000	2 3/8"API REG	DI/BPI	54,0	10-508617
89	6,3	4000	2 3/8"API REG	DI/BPI	68,6	10 -36 67
89	6,3	5000	2 3/8"API REG	DI/BPI	81,4	10-508619
89	6,3	6000	2 3/8"API REG	DI/BPI	94,2	10 -505952
89	6,3	7500	2 3/8"API REG	DI/BPI	^{113,4}	10 -3691
89	8,8	4000	2 3/8"API REG	DI/BPI	79,3	10 -36 68
89	8,8	5000	2 3/8"API REG	DI/BPI	95,2	10 -2955
89	8,8	6000	2 3/8"API REG	DI/BPI	111,2	10 - 67170 6
89	8,8	7500	2 3/8"API REG	DI/BPI	135,1	10 -3733
102	6,3	4000	2 7/8"API REG	DI/BPI	83,4	10 -3671
102	6,3	5000	2 7/8"API REG	DI/BPI	98,0	10-508620
102	6,3	6000	2 7/8"API REG	DI/BPI	^{112,6}	10 -50 6339
102	6,3	7500	2 7/8"API REG	DI/BPI	^{134,8}	10 -3692
102	8,8	4000	2 7/8"API REG	DI/BPI	102,0	10 -3673

Outer diameter (mm)	Wall thickness (mm)	S/S length (mm)	Thread	Flats (mm)	Weight (kg)	Part Number
102	8,8	5000	2 7/8"API REG	DI/BPI	122,1	10 - 312 8
102	8,8	6000	2 7/8"API REG	DI/BPI	142, 3	10 - 4163
102	8,8	7500	2 7/8"API REG	DI/BPI	172, 5	10 - 416 4
114	6,3	4000	3 1/2"API REG	DI/BPI	97,4	10 - 4165
114	6,3	5000	3 1/2"API REG	DI/BPI	114, 2	10-508621
114	6,3	6000	3 1/2"API REG	DI/BPI	131, 0	10 -505147
114	6,3	7500	3 1/2"API REG	DI/BPI	156, 2	10 -3693
114	8,8	4000	3 1/2"API REG	DI/BPI	118,1	10 - 416 6
114	8,8	5000	3 1/2"API REG	DI/BPI	141, 0	10 -313 0
114	8,8	6000	3 1/2"API REG	DI/BPI	163,9	10 -3131
114	8,8	7500	3 1/2"API REG	DI/BPI	198, 2	10 -3719
127	6,3	5000	3 1/2"API REG	DI/BPI	134, 2	10 - 3127
127	6,3	6000	3 1/2"API REG	DI/BPI	153, 0	10 -50519 0
127	6,3	7500	3 1/2"API REG	DI/BPI	181, 2	10 -369 4
127	8,8	6000	3 1/2"API REG	DI/BPI	189,9	10 -2923
127	8,8	7500	3 1/2"API REG	DI/BPI	228,4	10 -3720
140	8,8	7500	4 1/2"API REG	DI/BPI	255,7	10 -3695

C AT (REEDRILL, SKS, SKF, MD)

Diameter: **OD = 102–273 mm**
 Length: **S/S = 7620–10668 mm**



Outer diameter (mm)	Wall thickness (mm)	S/S length (mm)	Thread	Flats (mm)	Weight (kg)	Part Number
102	19	10 6 68	3 1/8" DIBH	REED/SKF	433,5	10 -4 0 45
114	12	914 4	3 1/2" DIBH	REED/SKF	309,6	10 -39 49
114	12	914 4	3 1/2" API REG	REED/SKF	310,1	10 -4167
114	12	914 4	3" BECO	REED/SKF	311,7	10 -3726
114	12	10 6 68	3 1/2" DIBH	REED/SKF	357,5	10 -3938
114	12	10 6 68	3" BECO	REED/SKF	359,6	10 -3727
114	19	914 4	3 1/2" API REG	REED/SKF	436,5	10 -416 8
127	19	7620	3 1/2" BECO	REED/SKF	422,5	10 -17 3 9
127	19	914 4	3 1/2" BECO	REED/SKF	503,1	10 -388 4
127	19	10 6 68	3 1/2" BECO	REED/SKF	583,7	10 -3868
140	12	10 6 68	3 1/2" DIBH	REED/SKF	456,8	10 -4 0 05
140	19	914 4	3 1/2" DIBH	REED/SKF	571,9	10 -4 0 0 4
140	19	10 6 68	4 1/8" DIBH	REED/SKF	659,8	10 -4 0 43
140	25	10 6 68	4 1/2 "API REG	REED/SKF	769,0	10 -3623

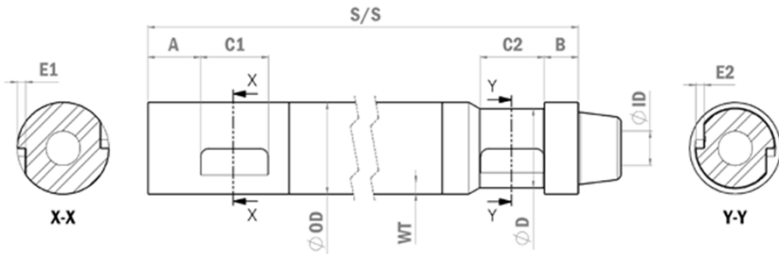
COMMON LARGER DIAMETERS

152	12–25		4" BECO	REED/SKF		On Request
159	12–25		4" BECO	REED/SKF		On Request
165	12–25		4" BECO	REED/SKF		On Request
16 8	12–25		4" BECO	REED/SKF		On Request
17 8	12–25		4 1/2" BECO	REED/SKF		On Request
19 4	12–25		5 1/4" BECO	REED/SKF		On Request
219	12–3 8		6" BECO	REED/SKF		On Request
235	12–3 8		6" BECO	REED/SKF		On Request
273	12–3 8		8" BECO	REED/SKF		On Request

We also have other dimensions, threads and lengths. Please contact us for more info.

C AT BUCYRUS

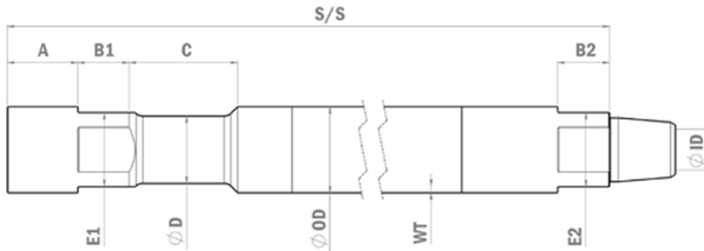
Diameter: **OD = 102–273 mm**
 Length: **S/S = 8540–10668 mm**



Outer diameter (mm)	Wall thickness (mm)	S/S length (mm)	Thread	Flats (mm)	Weight (kg)	Part Number
COMMON LARGER DIAMETERS						
102	12-25		3 1/8" DIBH	BUCYRUS		On Request
114	12-25		3 1/2" DIBH	BUCYRUS		On Request
127	12-25		4 1/8" DIBH	BUCYRUS		On Request
140	12-25		4 1/8" DIBH	BUCYRUS		On Request
152	12-25		4" BECO	BUCYRUS		On Request
159	12-25		4" BECO	BUCYRUS		On Request
165	12-25		4" BECO	BUCYRUS		On Request
168	12-25		4" BECO	BUCYRUS		On Request
178	12-25		4 1/2" BECO	BUCYRUS		On Request
194	12-25		5 1/4" BECO	BUCYRUS		On Request
219	12-38		6" BECO	BUCYRUS		On Request
235	12-38		6" BECO	BUCYRUS		On Request
273	12-38		8" BECO	BUCYRUS		On Request

SCHRAMM CAROUSEL

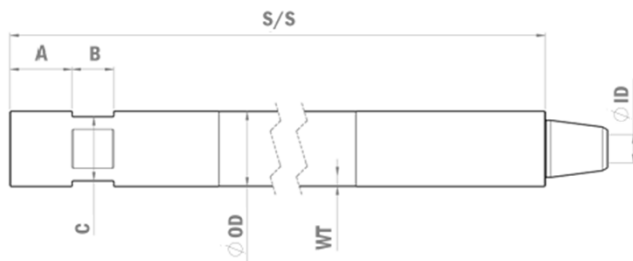
Diameter: **OD = 89–114 mm**
Length: **S/S = 6000–7620 mm**



Outer diameter (mm)	Wall thickness (mm)	S/S length (mm)	Thread	Flats (mm)	Weight (kg)	Part Number
89	8,8	6096	2 3/8"IF DS	SCHRAMM-CAROUSEL	107,1	10-20 01
89	10	6096	2 3/8"IF DS	SCHRAMM-CAROUSEL	126,7	10-174 3
114	8,8	6000	2 7/8"IF	SCHRAMM-CAROUSEL	150,8	10-117 0
114	8,8	6000	3 1/2"API REG	SCHRAMM-CAROUSEL	150,6	10-117 7
114	8,8	6096	2 7/8"IF	SCHRAMM-CAROUSEL	153,0	10-1213
114	8,8	6096	3 1/2"API REG	SCHRAMM-CAROUSEL	152,8	10-1492
114	8,8	6096	NC35	SCHRAMM-CAROUSEL	151,4	10-177 9
114	8,8	7620	2 7/8"IF	SCHRAMM-CAROUSEL	189,6	10-1214
114	8,8	7620	3 1/2"API REG	SCHRAMM-CAROUSEL	189,8	10-117 8
114	12	6096	3 1/2"API REG	SCHRAMM-CAROUSEL	202,8	10-176 9
114	12	7620	3 1/2"API REG	SCHRAMM-CAROUSEL	250,7	10-17 37

SCHRAMM T64

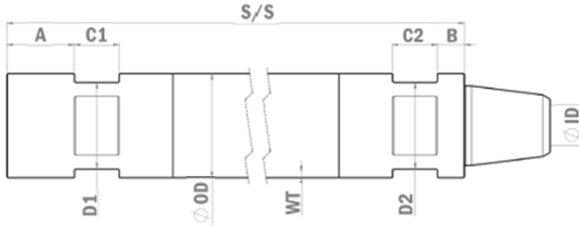
Diameter: **OD = 114 mm**
Length: **S/S = 2438-7620 mm**



Outer diameter (mm)	Wall thickness (mm)	S/S length (mm)	Thread	Flats (mm)	Weight (kg)	Part Number
114	8,8	2438	3 1/2"API REG	SCHRAMM-T64	74,4	10-2725
114	8,8	3658	3 1/2"API REG	SCHRAMM-T64	102,3	10-2726
114	8,8	6096	3 1/2"API REG	SCHRAMM-T64	158,1	10-1445
114	8,8	6248	3 1/2"API REG	SCHRAMM-T64	161,6	10-1845
114	8,8	7620	3 1/2"API REG	SCHRAMM-T64	194,4	10-2724
114	16	5182	3 1/2"API REG	SCHRAMM-T64	213,8	10-4026

SCHRAMM NT/WF (SQS)

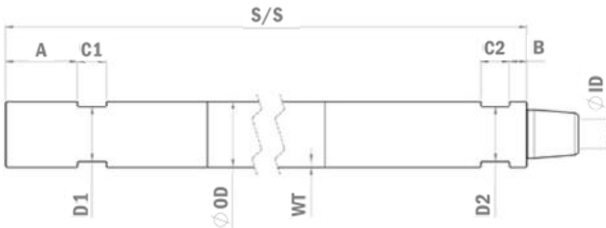
Diameter: **OD = 114 mm**
Length: **S/S = 6248–6706 mm**



Outer diameter (mm)	Wall thickness (mm)	S/S length (mm)	Thread	Flats (mm)	Weight (kg)	Part Number
114	8,8	6248	3 1/2"API REG	SCHRAMM-SQS	151,0	10 -15 8 0
114	8,8	6 4 01	3 1/2"API REG	SCHRAMM-SQS	154,5	10 -1591
114	8,8	6706	3 1/2"API REG	SCHRAMM-SQS	161,5	10 -15 8 1

M

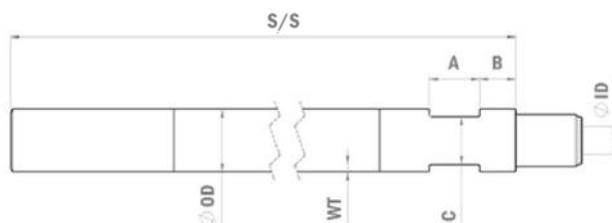
Diameter: **OD = 114–140 mm**
Length: **S/S = 6096–10000 mm**



Wall cknkss (mm)	S/S length (mm)	Thread	Flats (mm)	Weight (kg)	Part Number
114	8,8	6096	2 7/8"1F	SCHRAMM-TX130	162,7 10 -2730
114	19	6096	2 7/8"1F	SCHRAMM-TX130	292,5 10 -2797
14 0/114	8,8	10000	NC40	SCHRAMM-TX130	263,7 10 -2742
14 0/114	19	10000	NC40	SCHRAMM-TX130	488,6 10 -2798
14 0	8,8	914 4	NC40	SCHRAMM-TX130	295,4 10 -2910

CR50

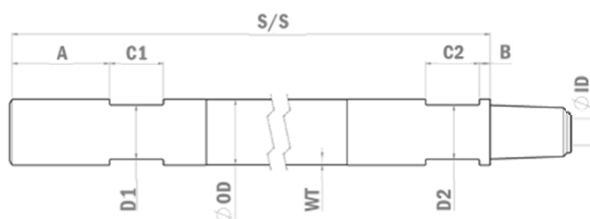
Diameter: OD = 50 mm
Length: S/S = 1500-3000 mm



Outer diameter (mm)	Wall thickness (mm)	S/S length (mm)	Thread	Flats Pin/Box (mm)	Weight (kg)	Part Number
50	6,3	1500	CR50	-/-	11,0	10 -3216
50	6,3	3000	CR50	38/-	21,1	10 -229 0

CR60

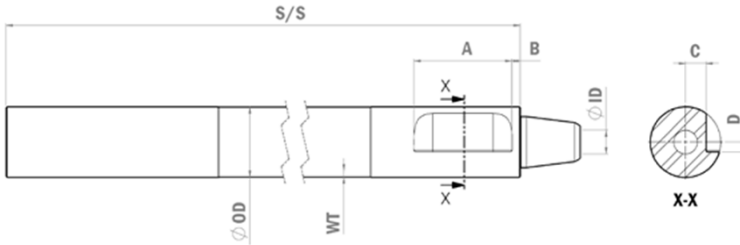
Diameter: OD = 60 mm
Length: S/S = 500-3000 mm



Outer diameter (mm)	Wall thickness (mm)	S/S length (mm)	Thread	Flats (mm)	Weight (kg)	Part Number
60	6,3	500	CR60	50	6,7	10 -229 4
60	6,3	750	CR60	50	8,8	10 -26 49
60	6,3	1000	CR60	50	10,9	10 -1856
60	6,3	1500	CR60	50	15,1	10 -1832
60	6,3	2000	CR60	50	19,3	10 -1855
60	6,3	3000	CR60	50	27,7	10 -1831

HAUSHERR

Diameter: **OD = 76–127 mm**
 Length: **S/S = 3000–6000 mm**



Outer diameter (mm)	Wall thickness (mm)	S/S length (mm)	Thread	Flats (mm)	Weight (kg)	Part Number
70	6,3	4000	HAUS 2"	HAUSHERR	45,3	10 -2747
70	8,8	3000	HAUS 2"	HAUSHERR	44,3	10 -24 69
70	8,8	4000	HAUS 2"	HAUSHERR	57,6	10 -2151
76	6,3	3000	2 3/8"API REG	HAUSHERR	38,9	10 - 4171
76	6,3	3000	2 3/8"RS	HAUSHERR	39,5	10 - 417 3
76	6,3	4000	2 3/8"API REG	HAUSHERR	49,7	10 -1958
76	6,3	4000	2 3/8"RS	HAUSHERR	50,3	10 -14 87
76	6,3	5000	2 3/8"API REG	HAUSHERR	60,5	10 - 417 2
76	6,3	5000	2 3/8"RS	HAUSHERR	61,1	10 - 4174
76	6,3	6000	2 3/8"API REG	HAUSHERR	71, 3	10 -2823
76	6,3	6000	2 3/8"RS	HAUSHERR	71,9	10 -139 6
76	8,8	3000	2 3/8"API REG	HAUSHERR	48,8	10 -250 8
76	8,8	3000	2 3/8"RS	HAUSHERR	49,5	10 -2254
76	8,8	4000	2 3/8"API REG	HAUSHERR	63,4	10 -2152
76	8,8	4000	2 3/8"RS	HAUSHERR	64,1	10 -1097
76	8,8	4000	GG2"	HAUSHERR	63,7	10 -189 9
76	8,8	5000	2 3/8"API REG	HAUSHERR	78,0	10 - 4175
76	8,8	5000	2 3/8"RS	HAUSHERR	78,7	10 -2156
76	8,8	6000	2 3/8"API REG	HAUSHERR	92,6	10 - 4176
76	8,8	6000	2 3/8"RS	HAUSHERR	93,3	10 -1098
76	8,8	6000	GG2"	HAUSHERR	92,9	10 -34 03

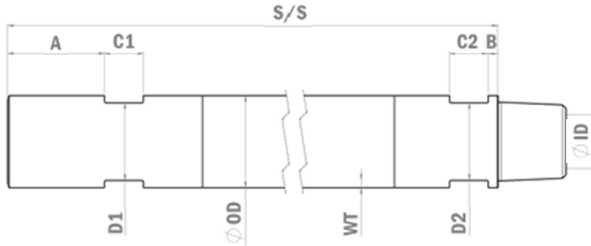
Outer diameter (mm)	Wall thickness (mm)	S/S length (mm)	Thread	Flats (mm)	Weight (kg)	Part Number
83	8,8	4000	2 3/8" API REG	HAUSHERR	71, 2	10 - 4 031
83	10	3000	2 3/8" API REG	HAUSHERR	60,0	10 -169 6
83	10	4000	2 3/8" API REG	HAUSHERR	77,9	10 -1697
83	10	6000	2 3/8" API REG	HAUSHERR	113,7	10 -2074
89	6,3	3000	2 3/8" API REG	HAUSHERR	48,7	10 - 417 7
89	6,3	4000	2 3/8" API REG	HAUSHERR	61, 5	10 -3182
89	6,3	5000	2 3/8" API REG	HAUSHERR	74,3	10 - 417 8
89	6,3	6000	2 3/8" API REG	HAUSHERR	8 7,1	10 - 417 9
89	8,8	3000	2 3/8" API REG	HAUSHERR	59,5	10 - 418 0
89	8,8	4000	2 3/8" API REG	HAUSHERR	75,5	10 - 4181
89	8,8	5000	2 3/8" API REG	HAUSHERR	91, 5	10 - 4182
89	8,8	6000	2 3/8" API REG	HAUSHERR	107,5	10 -2623

COMMON LARGER DIAMETERS

95	6 -19		2 7/8" API REG	HAUSHERR		On Request
102	6 -19		2 7/8" API REG	HAUSHERR		On Request
114	6 -19		3 1/2" API REG	HAUSHERR		On Request
127	8 -19		3 1/2" API REG	HAUSHERR		On Request

NORDMEYER

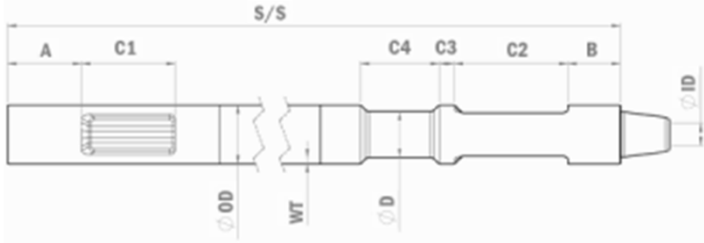
Diameter: **OD = 95 mm**
 Length: **S/S = 1000-3000 mm**



Outer diameter (mm)	Wall thickness (mm)	S/S length (mm)	Thread	Flats (mm)	Weight (kg)	Part Number
95	8	1000	NORDMEYER	80	21,5	10-2768
95	8	1500	NORDMEYER	80	30,0	10-2926
95	8	1700	NORDMEYER	80	33,4	10-2767
95	8	1800	NORDMEYER	80	35,1	10-2925
95	8	1900	NORDMEYER	80	36,8	10-2924
95	8	2000	NORDMEYER	80	38,5	10-2680
95	8	3000	NORDMEYER	80	55,7	10-3769

REICHDRILL

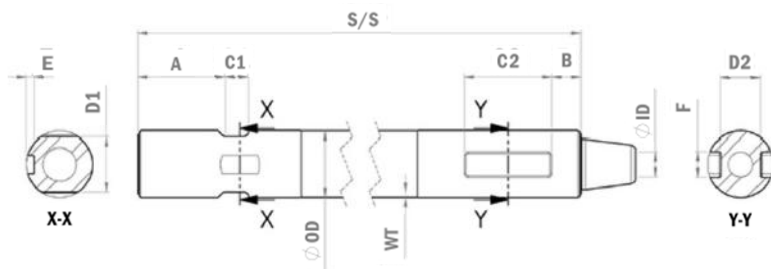
Diameter: **OD = 89–140 mm**
 Length: **S/S = 6096–10668 mm**



Outer diameter (mm)	Wall thickness (mm)	S/S length (mm)	Thread	Flats (mm)	Weight (kg)	Part Number
89	8,8	6096	2 3/8"IF	REICHDRILL	109,2	10 - 4195
89	8,8	7620	2 3/8"IF	REICHDRILL	133,5	10 - 4196
89	8,8	9144	2 3/8"IF	REICHDRILL	157,8	10 - 4197
102	8,8	6096	2 7/8" API REG	REICHDRILL	143,9	10 - 3579
102	8,8	7620	2 7/8" API REG	REICHDRILL	174,6	10 - 4185
102	8,8	9144	2 7/8" API REG	REICHDRILL	205,3	10 - 4186
114	12	6096	3 1/2"API REG	REICHDRILL	212,2	10 - 4199
114	12	7620	3 1/2"API REG	REICHDRILL	260,0	10 - 4200
114	12	9144	3 1/2"API REG	REICHDRILL	307,8	10 - 4201
127	12	6096	3 1/2"BECO	REICHDRILL	249,5	10 - 4202
127	12	7620	3 1/2"BECO	REICHDRILL	303,3	10 - 4203
127	12	9144	3 1/2"BECO	REICHDRILL	357,1	10 - 4204
127	12	10 6 68	3 1/2"BECO	REICHDRILL	410,9	10 - 4205
140	12	6096	3 1/2"BECO	REICHDRILL	286,3	10 - 4206
140	12	7620	3 1/2"BECO	REICHDRILL	346,1	10 - 4207
140	12	9144	3 1/2"BECO	REICHDRILL	405,9	10 - 4208
140	12	10 6 68	3 1/2"BECO	REICHDRILL	465,7	10 - 4209

REVAHTI

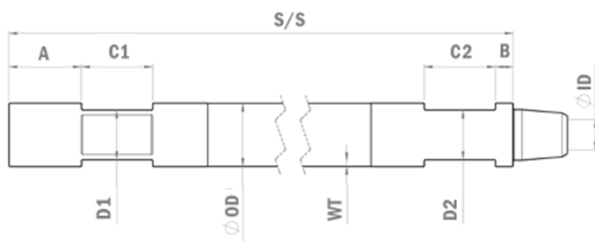
Diameter: **OD = 114 mm**
 Length: **S/S = 3048–6096 mm**



	Wall thickness (mm)	S/S length (mm)	Thread	Flats (mm)	Weight (kg)	Part Number
114	8,8	3048	3 1/2"API REG	REVAHTI	88,2	10-1925
114	8,8	6096	3 1/2"API REG	REVAHTI	158,0	10-1924

STAR

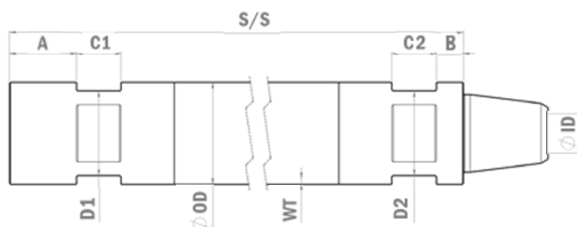
Diameter: **OD = 89–114 mm**
 Length: **S/S = 914–6096 mm**



Outer diameter (mm)	Wall thickness (mm)	S/S length (mm)	Thread	Flats (mm)	Weight (kg)	Part Number
89	8,8	6096	2 3/8"IF	SPEEDSTAR	10 4,0	10-1884
114	8,8	914	2 7/8"IF	SPEEDSTAR	39,8	10-2190
114	8,8	4572	2 7/8"IF	SPEEDSTAR	123,6	10-2189
114	8,8	6096	2 7/8"IF	SPEEDSTAR	158,5	10-1756

RC (Reverse Circulation)

Diameter: OD = 76-305 mm
Length: S/S = 500-10000 mm

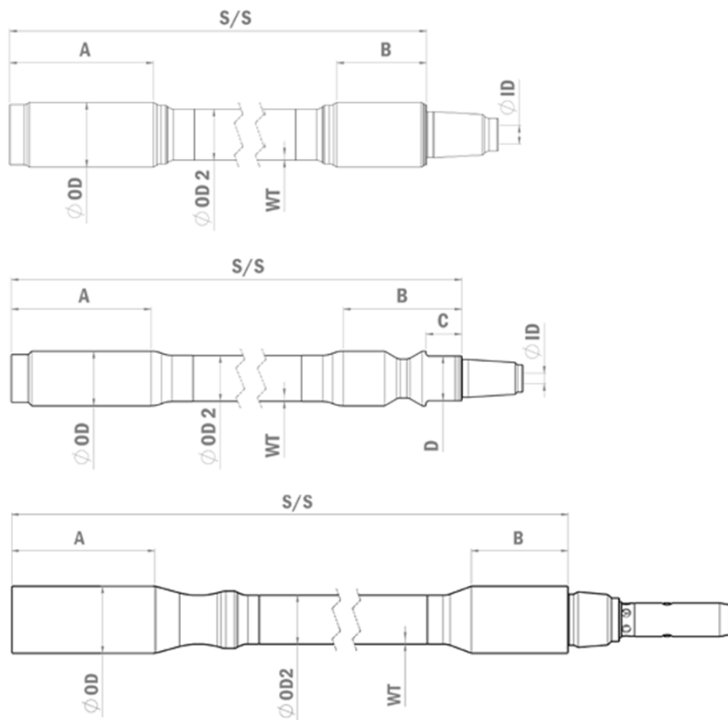


Outer diameter (mm)	Wall thickness (mm)	S/S length (mm)	Thread	Flats (mm)	Weight (kg)	Part Number
COMMON DIAMETERS						
76	4-8	500-10000	See below			On Request
83	4-8	500-10000	See below			On Request
89	4-8	500-10000	See below			On Request
102	4-8	500-10000	See below			On Request
114	5-12	500-10000	See below			On Request
127	6-12	500-10000	See below			On Request
140	8-19	500-10000	See below			On Request
152	10-25	500-10000	See below			On Request
159	10-25	500-10000	See below			On Request
165	10-25	500-10000	See below			On Request
168	10-25	500-10000	See below			On Request
178	10-25	500-10000	See below			On Request
194	12-25	500-10000	See below			On Request
219	12-25	500-10000	See below			On Request
235	12-25	500-10000	See below			On Request
273	12-25	500-10000	See below			On Request
305	12-25	500-10000	See below			On Request

Driconeq manufactures all types of RC-pipes. Common threads on Driconeq RC-pipes is: DR, METZKE, REMET, MATRIX, FABER and CSR.

DITCH-WITCH

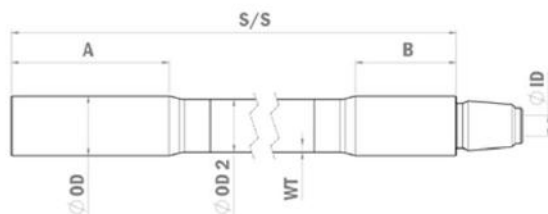
Diameter: **OD = 51–76 mm**
 Length: **S/S = 1828–3048 mm**



	Outer diameter (mm)	Wall thickness (mm)	S/S length (mm)	Thread	Flats (mm)	Weight (kg)	Part Number
(JT922, JT9)	51/42	5,0	1828	DW920	None	10,6	60-10 43
(JT920, JT921)	51/42	5,0	2000	DW920	-/41,5	11,5	60-10 09
(JT920L)	51/42	5,0	3000	DW920	-/41,5	16,1	60-102 3
(JT1220)	60/48	6,3	3048	DW1220 M1	None	23,3	60-1038
(JT1720)	64/51	6,3	3000	DW1720	-/53,2	26,0	60-1016
(JT2020, JT20)	67/51	6,3	3048	DW2720	None	25,3	60-1039
(JT2720)	70/57	6,3	3000	DW2720	-/59,8	30,3	60-1015
(JT25, JT2720 M1, JT30, JT3020 M1)	76/60	6,3	3000	DW2720 M1	None	31,9	60-10 44
(AT 30, AT 27 20)	82/60	6,3	2850	AT 3 020	None	48,6	60-10 48

VERMEER

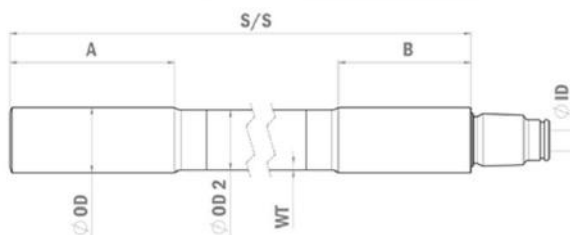
Diameter: **OD = 48–67 mm**
 Length: **S/S = 1828–3048 mm**



	Outer diameter (mm)	Wall thickness (mm)	S/S length (mm)	Thread	Flats (mm)	Weight (kg)	Part Number
(D6x6, D7x11, D7x11A, D7x11 S2, D9x13 S2)	4 8/42	5,0	1828	#200	None	9,8	6 0-10 0 6
(D10x14, D10 x15)	4 8/42	5,0	3048	#200	None	15,4	6 0-10 11
(D16x20A, D16x20 S2, D18 x 22)	54/4 8	6,3	3048	#250	None	22,0	6 0-1026
(D20x22, D20x22 S2)	58/51	6,3	3000	#400	None	22,7	6 0-10 41
(D24x40, D24x40A, D24x40 S2)	67/6 0	6,3	3048	#600	None	28,8	6 0-3023

O-TECHNIC

Diameter: **OD = 62 mm**
 Length: **S/S = 3000 mm**



	Outer diameter (mm)	Wall thickness (mm)	S/S length (mm)	Thread	Flats (mm)	Weight (kg)	Part Number
(Grundodrill 10S/X, Grundodrill 13X)	62/57	6,3	3000	T T RD49	None	27,0	6 0-102 5

Specialised and standard products are available
for DTH, ROTARY, HDD and RC drilling methods.
For all types of drill rigs, in all locations.

Contact us for more information:
www.pmt-uae.com

: Contact Details
info@pmt-uae.com
www.pmt-uae.com
00971501217751